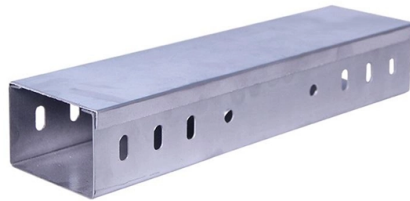


# What size cable is needed for a 1250 distribution box



## Overview

Maximum cable area for the connections is  $10 \text{ mm}^2$ . The gauge of the cable connecting the DISTRIBUTION BOX to another unit must be at least the same as the incoming cable gauge. If the DISTRIBUTION BOX is connected to another unit, an external fuse is needed before the. The NEC (National Electrical Code) provides guidance on how to size wires correctly for feeders and subpanels. These rules change slightly from one edition to the next. Calculate proper wire gauge, voltage drop, and ampacity for safe electrical installations. Ensure safe placement: install in dry, accessible areas with good ventilation and at appropriate height (typically  $\sim 1$ ). Practice good wiring: secure grounding, neat cable management, proper insulation, and correct wire gauge and breaker. I have a 3 phase main breaker of 1250A and voltage supplied is 110V, what will be the size of main cable needed and how many pairs, any one illustrate. It is 208V, 240V or possibly 480, etc. To supply 1250 amps you would have to parallel. The Quick Answers for How to size a cable! If you are looking for the quick answer to How to size a cable, scroll down to the Yellow highlighted text and find the word " Simple " for the easy answer.



## Article Content

### 1250 kVA Distribution Transformer

Transformer Features: With a transformer rating of 1250 kVA, the MT-DOE16-3P-400D-1250KVA-480Y.277-N3R-50HZ distribution transformer is a three phase unit with a primary voltage of 400 V

### Wire size for a 480V 3PH / 1200 Amp Service

Hey guys, I have a 1200 amp 3ph 480v main breaker panel to install. For the wire sizing do I need to have conductors large enough to carry 1200 amps on each leg or conductors to carry

### How to size a Cable Correctly Step-By-Step

This article will be a good reference guide for how to size a cable, and we will also include a PDF version of how to size a cable so you can take it with

### Wire Size Calculator

Calculate the appropriate wire size for your electrical installation by entering the required parameters below. This calculator helps determine the correct wire

### SDP 1250A Panel

The 1250A SDP (Sub Distribution Panel) panel with a box size of 160x80x180 cm is a low-voltage main distribution panel designed to distribute electrical power safely

### Wire Size Calculator | Professional NEC Compliant Tool

Professional wire size calculator based on NEC standards. Calculate proper wire gauge, voltage drop, and ampacity for electrical circuits.

### How to choose a distribution box of the right size for a project based ...

If you're like most electrical professionals, picking the right distribution box for your project can feel like navigating a maze. I've been in those shoes - staring at spec sheets, worrying about

### Bharat Heavy Electricals Limited

Specification No- CFF/CDS/O-2 PDB Specification for 3200A, 415V Distribution Board 1. The Power Distribution Board (PDB) should consist of ACBs (Only specified makes) housed in a sheet steel

### The Complete Guide to Distribution Box: Installation, Types & More

How do I choose the right size distribution box? Size selection depends on the number of circuits needed, current ratings, and future expansion plans. Calculate the total electrical load and

## Wire Size Calculator | Professional NEC Compliant Tool

Calculate proper wire size based on NEC standards. Professional tool for electrical wire sizing, voltage drop calculations, and ampacity ratings.

WORLD WIDE WEB JOURNAL Home

O'Reilly & Associates, Inc. 103A Morris St. Sebastopol, CA United States

### DISTRIBUTION BOX

The gauge of the cable connecting the DISTRIBUTION BOX to another unit must be at least the same as the incoming cable gauge. If the DISTRIBUTION BOX is connected to another

Jual Panel SDP 1250 Ampere

Deskripsi Produk Panel SDP (Sub Distribution Panel) 1250A dengan ukuran box 160x80x180 cm merupakan panel distribusi utama bertegangan

How to determine the size, installation method and

When the wall is built, the reserved hole shall be about 20 mm larger than the length and width of the distribution box. The reserved depth is the thickness of the

UKK 1250A ukk Series Electrical Unipolar Junction Box

UKK 1250A Single Pole / multipole distribution blocks These Single Pole UKK 1250A Power Distribution Box Terminal Block have multiple approvals for use with

Wire Size Calculator For Subpanels And Feeders - NEC

Proper feeder cable size depends on load, distance, and voltage drop considerations. Use an accurate NEC feeder wire calculator to simplify sizing for

Cable Size for 3 phase 1250A breaker

Actually we are using the cables in our construction project, our consultant has given us the approved size (3\*300mm<sup>2</sup>+150mm<sup>2</sup>) of the cables to be used for connecting the two main

How to Size Main Panel, Load Center, and Consumer

Sizing Main Panel, Load Center, Panelboards, Distribution Board & Consumer Unit According to NEC and IEC? How to Determine the Right Size of Breaker Box?

The installation requirements for the distribution box

Ensure safe placement: install in dry, accessible areas with good ventilation and at appropriate height (typically ~1.5m). Practice good wiring:

Size configuration of multiple circuit breakers in the

Choose the right size and setup for multiple circuit breakers in your distribution box to ensure safety, code compliance, and room for future upgrades.

What Size Wire Do I Need for a Sub Panel?

Don't guess your wire size. Get a complete guide to accurately calculating subpanel feeder wire gauge based on load, environment, and code.

WIRING METHODS FOR SUBPANEL CONNECTIONS:

- Cable is flat/oval
- Primarily used to convey power from the service drop to the meter base and from the meter base to the distribution panelboard
- Can be used anywhere SE cables are permitted

## Contact Us

For more information, pricing, or custom solutions, please contact us:

Website: <https://pvprojekt.com.pl>

Email: [contact@pvprojekt.com.pl](mailto:contact@pvprojekt.com.pl)

Phone: +48 512 897 346

Address: ul. Tęczowa 17, 61-001 Poznań, Greater Poland Voivodeship, Poland

This document is for informational purposes only. Specifications subject to change without notice.

