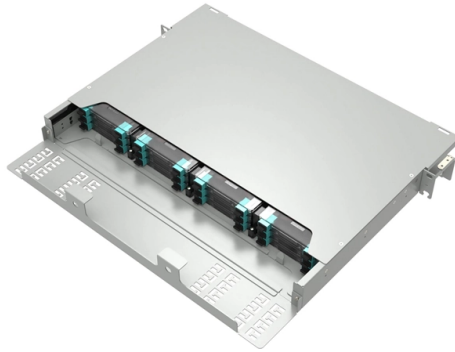


Weak Point Optical Module Switch



Overview

Solution: First check whether the optical port is on, then check whether the optical module parameters (such as wavelength, rate and transmission distance) inserted by the devices at both ends match, and whether the optical module type (single mode/multi-mode) matches the. Solution: First check whether the optical port is on, then check whether the optical module parameters (such as wavelength, rate and transmission distance) inserted by the devices at both ends match, and whether the optical module type (single mode/multi-mode) matches the. The "Rx power low warning" message typically indicate an issue with the received optical power on one of the switch's SFP modules or interfaces. This warning is generated when the received optical power falls below an acceptable threshold. 10-30-2023. This article will help you understand various warning signs for common faults, suggest practical troubleshooting steps, and share preventive inspections and maintenance, so you can do your due diligence in keeping your network safe with high availability. There are multiple ways that optical. Based on typical issues encountered with optical modules in daily switch applications, this document summarizes basic troubleshooting steps for resolving common faults: 1. Check compatibility between the optical module and switch Most switch brands have specific compatibility requirements. An optical module is a critical component in modern optical communication systems, directly affecting transmission stability, network reliability, and operational efficiency. However, during installation and daily operation, various issues may arise. Therefore, understanding common optical module. Digital Diagnostics Monitoring (DDM), also known as Digital Optical Monitoring (DOM) or Diagnostic Monitoring Interface (DMI), is a standardized feature defined by SFF-8472 that allows network devices to monitor real-time optical transceiver parameters such as temperature, voltage, transmit power. An optical module delivered by Huawei is uniquely identified by an SN.

Article Content

Common Optical Transceiver Failures and Effective Troubleshooting ...

Introduction: Why Optical Transceiver Reliability Is Critical As core components in high-speed data networks, optical transceivers enable communication between switches, routers, and

Typical Troubleshooting Cases of Optical Module

Use an optical power meter to measure the transmit power of the optical module. If the transmit power of the optical module is not in the normal range, replace the optical module.

Common Problems And Solutions When Using Optical

As a more sensitive optical device, optical modules sometimes have some problems during use. Below, Telecomate will list some common problems and

Optical Switches Principles Classifications and Applications-

Optical Cross-Connects (OXC): Dynamically reroute wavelengths in backbone networks Reconfigurable Optical Add-Drop Multiplexers (ROADM): MEMS switches enable bandwidth-on

MINA_A_201542_O 0..11

Faster actuation has proven more challenging with cross-point architectures generally because the physical size of the switching elements has largely precluded the use of fast electro-optic switching.

Troubleshooting Common SFP Module Issues

Learn how to troubleshoot common SFP module issues including physical faults, hardware damage, compatibility, and configuration errors. This guide provides

optical module Troubleshooting and Common Problems

optical module troubleshooting guide covering common faults, compatibility issues, optical link failures, ESD risks, and practical solutions.

Analyzing Abnormal Situations During Installation and Use of Optical

As core components of optical communication systems, the proper installation and use of optical modules directly impacts network stability. This article systematically identifies common

What Is an Optical Module and Its FAQs (V200)

What Is an Optical Module and Its FAQs (V200) Describes what an optical module is and FAQs, including the fundamentals, appearance and structure, key performance counters, common types,

Optical Module Common Problem and Maintenance Method

B) Remote test: Computers at both ends on the PING, PING general clauses must check whether the optical connection of normal and fiber optic transceivers transmit and receive power is within the

Optical Module Common Failure Of Optical Power

When the transmit optical power exceeds the nominal working range, it may cause the optical module to work abnormally, thus affecting the network data

How to do if Transmit or Receive Power Is Abnormal on Optical Port of ...

To rectify the fault, use optical modules from the same vendor. Perform a short fiber loopback test. If the fault cannot be located, replace the optical module or fiber.

Optical Module Failure Diagnosis and Prevention:

Understanding how to troubleshoot and prevent a failing optical module is vital for good network stability.

Optical Module Common Failure Of Optical Power

1. Transmit optical power When the optical modules at both ends of the link work normally, the transmit optical power is within a certain range, which can be

Everything You Need to Know About Optical Modules

Optical modules are electronic devices used in communication systems to transmit optical signals. These modules convert electrical signals into optical

What is DDM/DOM? Optical Module Monitoring & Troubleshooting 2026

Master DDM/DOM in optical modules. Learn how to monitor Tx/Rx power, temperature, and predict failures in enterprise, data center, and 800G AI networks.

Optical Module Application: Common Problems & Troubleshooting

Based on typical issues encountered with optical modules in daily switch applications, this document summarizes basic troubleshooting steps for resolving common faults:

FAQs About Optical Modules

For details about the optical modules supported by optical ports on switches, see "Appearance and Structure" of a specific switch model in the Hardware Description. The following figure shows the

Troubleshooting Your Optical Transceiver: A

Optical transceivers play a crucial role in modern data communication networks, enabling the transmission and reception of optical signals across fiber

Optical Module PCB: The Ultimate Guide to Design, Fabrication, and ...

This guide serves as an in-depth resource for engineers, designers, and project managers involved in the development of optical module PCBs. It will explore the complete product lifecycle, from design

optical module Troubleshooting and Common Problems

Conclusion: Reducing Optical Module Failures Through Knowledge and Quality By thoroughly understanding common optical module problems and

Solved: Rx power low warning in cisco 2960Cx

Hello @shekhar bellsare, The "Rx power low warning" message typically indicate an issue with the received optical power on one of the switch's SFP modules or interfaces. This warning is

Summary of common problems and solutions of optical modules in

Solution: Check whether the working parameters, interface information and receiving and sending of the optical module are normal, and then check the optical fiber jumper, or try to replace the optical fiber

Troubleshooting and Repairing Optical Transceiver Failures in

SFP or SFP+ optical transceiver failure can happen in multiple recognizable ways. The most notable fault is the "module not detected" error, which describes a situation in which a switch

Common knowledge of optical fibers, optical modules and optical ...

This article shares common knowledge of optical fibers, optical modules and optical interfaces for everyone, hoping to help everyone.

Optical Interface Interconnection Is Abnormal on CE Switches ...

CloudEngine 16800, 12800, 9800, 8800, 7800, 6800, and 5800 Series Switches Troubleshooting Guide (V100 and V200) Optical Interface Interconnection Is Abnormal on CE

What Are Optical Switches and How Do They Work?

Optical switches operate purely at the physical layer of the network, meaning they are concerned only with the physical path of the light beam. Because the signal remains as light, the

Optical Module Application: Common Problems & Troubleshooting

According to the optical module in the daily application of the switch on some of the problems, summed up a few points to eliminate the basic method of simple problems, the basic steps

The Most Comprehensive Guide Of Optical Modules

Explore the ultimate guide to optical modules. Learn types, functions, performance metrics & how to choose the right module for your fiber network.

Contact Us

For more information, pricing, or custom solutions, please contact us:

Website: <https://pvprojekt.com.pl>

Email: contact@pvprojekt.com.pl

Phone: +48 512 897 346

Address: ul. Tęczowa 17, 61-001 Poznań, Greater Poland Voivodeship, Poland

This document is for informational purposes only. Specifications subject to change without notice.

