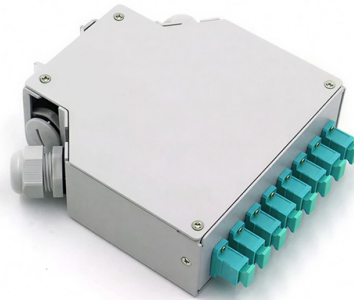


Telecom cables run in cable trays



Overview

A cable tray is an organized support structure designed to secure and route these insulated electrical cables. It acts as a dedicated pathway for power distribution and data transmission, often supporting cables hidden behind walls or above ceilings. Question 1: Can mechanical utility piping or tubing containing water or compressed air be installed in cable trays with electrical cables?

Answer: No. Far superior to traditional conduit in many applications, cable tray systems offer unparalleled accessibility for maintenance. NEC Article 392 explains cable trays, their components, appropriate wiring methods for cable trays, and instances where they are and are not permitted for use. Here is the summary of the main points found in NEC Article. Whether suspended from the ceiling, wall-mounted, or supported by racks and cabinets, overhead cable management systems are flexible and scalable.



Article Content

GENERAL INFORMATION

Cable trays or raceways often provide a convenient, safe and efficient method of fiber optic cable installation. Trays can be installed in ceilings, below floors and in riser shafts. When installing fiber

Everything You Need to Know About Cable Trays | Cable Trays

Discover the different types of cable trays, their many benefits when used in electrical wiring and network cabling, installation processes, and essential maintenance tips for keeping your

What Are Cable Trays and How Do They Work?

A cable tray is an organized support structure designed to secure and route these insulated electrical cables. It acts as a dedicated pathway for power distribution and data transmission, often supporting

Exploring Cable Tray Types and Applications

Often unheralded, cable trays play a vital role in tray cable installations throughout industrial, commercial, and residential projects.

Cable Tray Technical Guide A practical guide to product selection and ...

Cable tray installed in a hazardous location must contain only those cables that are appropriate for this type of environment as defined in Chapter 5 of the NEC.

7 Types of Cable Trays: How to Choose the Right One

Cable tray systems are engineered support structures designed to route, support, and protect insulated electrical cables used for power distribution,

Cable Trays Selection Guide: Types, Features,

Cable trays are components of support systems for power and communications cables and wires. A cable tray system supports and protects both power and

Running Telephone Cable in medium voltage cable tray | Eng-Tips

I am in the US, so hoping to get some thoughts from an NEC compliance perspective. We need to run a telephone cable and the only route is a 20kV cable tray with Type MC cable. 392.6

Cable Tray Types and Sizes

What is Cable Tray Systems? An electrical cable tray is a type of containment system used to support insulated electrical cables for power distribution, control,

Types of Cable Typically Used in Cable Tray

Communication Cables – types CMP, CMR, CMG, CM, CMX Fire Alarm Cables – type NPLF – NPLFP, FPL-FPLP (CI) Type TC – Tray Cable – (NEC Article 336)

Cable Tray Systems: Requirements and Best Practices

Comprehensive guide to cable tray systems requirements: tray types, materials, loading, supports, bonding, routing, and best practices for safe electrical cable management.

Cable Tray Technical Guide A practical guide to product selection and ...

SOLID-BOTTOM CABLE TRAY Providing additional cable protection, solid-bottom cable tray is sometimes preferred to support and protect numerous small instrumentation and control cables.

Best practices for underfloor cable management

Power cables are run close to the floor in cable tray located in the cold aisle, underneath perforated floor tiles. Arranging the cables in this way provides horizontal separation by allocating different rows of

Cable Tray Systems: A Complete Guide to Types

Discover the essential guide to cable tray systems. Learn about ladder, trough, and wire mesh types, key components, and expert installation tips

What are Cable Trays & Different Types of Cable Trays

Learn what cable trays are & explore the various types, benefits, and purposes. Gain insights into how electrical cable trays can revolutionize your

Overhead Cable Management: Cable Runway vs. Cable

Modern data centers could not survive without proper overhead cable management. Learn all about cable pathway systems such as cable tray & cable

Telecommunications Horizontal Cabling and Support Structure

The maximum horizontal distance shall be 76-meters (250 ft). For ease of cable installation and future expansion in hallway or major distribution routes, cable trays are the preferred method for distributing

GUIDE CABLE TRAYS TECHNICAL

The cable management system's electromagnetic performance characterises its ability to protect its cables from external electromagnetic disturbance; if this is controlled, the data carried by the cables

SECTION 270528 — CABLE TRAY FOR TELECOMMUNICATIONS

For a given manufacturer, all components shall be part of a single cable tray product line – components shall not be intermixed between a manufacturer's cable tray product lines.

What is Cable Tray and How it is used in Industrial

What is Cable Tray? In electrical cabling, a cable tray is a metallic structure used to handle insulated electrical power distribution, control, and

Cable tray

In the electrical wiring of buildings, a cable tray system is used to support insulated electrical cables used for power distribution, control, and communication. Cable

The Complete Guide to Cable Trays | Snake Tray

Learn about the benefits and applications of cable trays, and the specific advantages of using Snake Tray products.

Explaining NEC Article 392 on Cable Trays

Cables and conductors must be secured to the cable tray at intervals according to installation instructions. For non-horizontal runs, cables should be

Cable Tray Questions | Cable Tray Institute

Answer: No. Cable trays are a support system for electrical cables, power, signal, and communication and optical fiber cables. NEC section 300-8 does not permit any tube, pipe, or equal for water, air

Installation Of Cable In Cable Trays: NEC, Safety

The use of ladder-type trays as raceways for insulated cables is becoming more prevalent. These raceways are being more heavily loaded with increasing

A Complete Guide to Cable Trays Sizes and Selection

Explore our complete guide to cable trays sizes. Learn how to calculate loads, select types, and navigate UK standards for a certified network installation.

Cable Tray Types and Sizes

Explore various cable tray types and sizes for electrical installations. Learn about ladder, perforated, solid-bottom, wire mesh, and channel

Cables Allowed in Tray

CABLES ALLOWED IN TRAY Cable tray is one of the most common methods of supporting wire and cable. There are many different types of cable tray including basket, ladder and solid-bottom. Tray

Contact Us

For more information, pricing, or custom solutions, please contact us:

Website: <https://pvprojekt.com.pl>

Email: contact@pvprojekt.com.pl

Phone: +48 512 897 346

Address: ul. Tęczowa 17, 61-001 Poznań, Greater Poland Voivodeship, Poland

This document is for informational purposes only. Specifications subject to change without notice.

