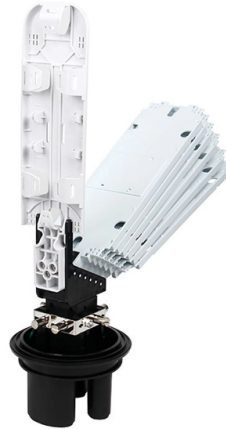


Sw distribution box sealing



Overview

The base is made of solid rubber and a seal is embedded in its upper edge; the cover is fitted with a relief seal so that the parts fit together perfectly, thus guaranteeing a double seal (min. Automated sealing solution for control cabinet construction The lifelines of highly automated industrial production for electrical distribution and for the control and safety technology of manufacturing plants come together in control cabinets and electrical distribution boxes right down to the. Our sealing modules have removable layers enabling a perfect fit to cables and pipes of different sizes. Just peel off layers until the module fits. One area efficient Roxtec seal can replace up to 32 traditional cable glands. The built in spare capacity makes it easy to open up the seal and change. A world-class manufacturer of gaskets, seals, and sealing technology solutions for companies and OEMs worldwide, serving many specialist industry sectors. 5 mm, black Double membrane seals, IP66, with two sealing membranes, closed, thermoplastic elastomer (TPE), for wall thicknesses 1. These products help prevent moisture, dust, pollutants, and other harmful substances from entering electrical systems, ensuring. Selection and installation of waterproof junction box sealing strip/waterproof ring: Select sealing strip or waterproof ring suitable for the size of waterproof distribution box base to ensure waterproof electrical box has good elasticity and durability.

Article Content

Junction box Abox 025/2 AB-L/sw (80200301)

The new Abox redefines safety, flexibility and speed of assembly in the installation of junction boxes. With an extended range of applications both indoors and in protected outdoor areas, it offers greater

Seals for Distribution/Inspection Chamber Boxes

Buy Seals for Distribution/Inspection Chamber Boxes from Polylok today. Check out our large collection of plastic injection moulded products for the onsite

BOXES & COVERS

Southwire's line of steel boxes and covers is one of the largest lines in the industry. 4" Square Boxes & Covers 4-11/16" Square Boxes & Covers 5" Square Boxes & Covers 6" Boxes & Covers Pan Boxes

Enclosures and Distribution boxes | Sonderhoff

Henkel's polyurethane or silicone sealing foams protect the electronics in control cabinets and electrical distribution boxes against external influences, such as

CABLE ENTRY SEALS

The seal is designed to withstand the harshest of environments and it is approved for use in hazardous and industrial applications as a direct replacement to cable glands.

Terminal box seals

Terminal box seals, also known as cover seals, are crucial for the reliable sealing of terminal boxes and housings in various applications, such as in the electrical

Junction box Abox 040-L/sw (80400001)

The new Abox redefines safety, flexibility and speed of assembly in the installation of junction boxes. With an extended range of applications both indoors and in protected outdoor areas, it offers greater

Power distributor / plug connections

The base is made of solid rubber and a seal is embedded in its upper edge; the cover is fitted with a relief seal so that the parts fit together perfectly, thus guaranteeing a double seal (min. IP54).

SEALING OF CONTROL CABINETS & ELECTRICAL DISTRIBUTION BOXES

Automated sealing solution for control cabinet construction The lifelines of highly automated industrial production for electrical distribution and for the control and safety technology of manufacturing plants

Installing D-Boxes

Good practices call for keeping drop boxes and distribution boxes level and sealing them properly to stop root and water penetration

Sealing of wiring system penetrations

Sealing Methods Various types of fire-stopping products or solutions can be used for external sealing and may include intumescent mastics/gaskets,

Polylok Distribution Box Pipe Seal

Order additional seals here! This Polylok distribution box seal accepts 2", 3", or 4" pipe. Simply cut to size using the pattern on the seal. Creates a watertight seal

Junction box Abox 060-6²/sw (80602001) Indoor and protected

The new Abox redefines safety, flexibility and speed of assembly in the installation of junction boxes. With an extended range of applications both indoors and in protected outdoor areas, it offers greater

Sealing products | seals for electrical wires | cables | panels | boxes

Sealing products are specifically designed to ensure the integrity of electrical cables, panels, and boxes, providing protection against adverse environmental effects.

How to Seal an Electrical Enclosure? [May 2026]

Learn how to seal electrical enclosures effectively to protect equipment from moisture, dust, and harsh environments. Step-by-step guide and

SEALING OF CONTROL CABINETS & ELECTRICAL

Are you looking for a flexible automation system for the sealing of your control cabinet construction that fits to your production conditions?

Entry seal for electrical cabinet enclosures | Roxtec Global

The seals can be pre-packed at the work bench for quick field installation in electrical cabinets and other electrical enclosures such as junction

Selection Of Sealing Strips For Waterproof Distribution Boxes

Selection and installation of waterproof junction box sealing strip/waterproof ring: Select sealing strip or waterproof ring suitable for the size of waterproof distribution box base to ensure

Double-membrane seals DMS M25/sw (26002501) Junction boxes,

The new Abox redefines safety, flexibility and speed of assembly in the installation of junction boxes. With an extended range of applications both indoors and in protected outdoor areas, it offers greater

Terminal box seals

Terminal box seals for sealing in sensitive and live areas Terminal box seals, also known as cover seals, are crucial for the reliable sealing of terminal boxes and

Sonderhoff DM50x

Sonderhoff DM50x - Process solution for sealing electrical distribution boxes Henkel Adhesive Technologies 5.67K subscribers [Subscribe](#)

Gaskets | Gasket Manufacturer | Seals | JA Harrison

JA Harrison offers a full range of metallic and non-metallic gaskets, including materials such as rubber corks, non-asbestos fibre, and spiral wound. It also

What factors will affect the sealing of waterproof distribution box

The sealing ring of distribution box is the best protection, which plays a very important role in the protection of waterproof distribution box. For a long time, the continuity of the degree of protection

The Complete Guide to Septic Tank Distribution Boxes

The distribution box serves to evenly divide and distribute the effluent exiting the septic tank to the entire drain field. When wastewater enters the box

SW-MC ATEX Explosion Proof Power Supply

PRODUCT FEATURES SMC material is used for pressing and molding. There are fixed mounting holes at the bottom of the box. The size of the mounting holes is

Double-membrane seals DMS M32/sw (26003201) General accessories

The new Abox redefines safety, flexibility and speed of assembly in the installation of junction boxes. With an extended range of applications both indoors and in protected outdoor areas, it offers greater

Contact Us

For more information, pricing, or custom solutions, please contact us:

Website: <https://pvprojekt.com.pl>

Email: contact@pvprojekt.com.pl

Phone: +48 512 897 346

Address: ul. Tęczowa 17, 61-001 Poznań, Greater Poland Voivodeship, Poland

This document is for informational purposes only. Specifications subject to change without notice.

