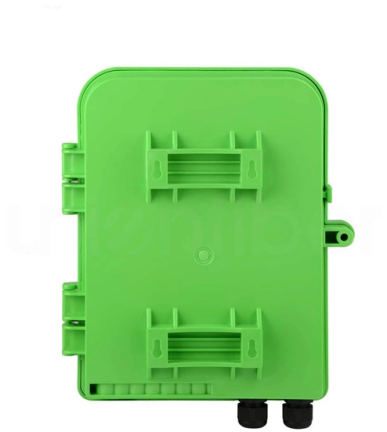


Standard Requirements for Parallel Installation of Distribution Boxes



Overview

Check for proper IP/NEMA ratings and material quality. Ensure safe placement: install in dry, accessible areas with good ventilation and at appropriate height (typically ~1. Practice good wiring: secure grounding, neat cable management, proper insulation, and correct wire. Abstract: The design, installation, and protection of wire and cable systems in substations are covered in this guide, with the objective of minimizing cable failures and their consequences. Copyright © 2008 by the Institute of Electrical and Electronics Engineers, Inc. If it's done poorly, you risk short circuits, fire hazards, or system failure. In this guide, we'll break down everything you need to know to install. The requirement shown as below must be satisfied: 1: Algebraic apparent power of back-up loads must be less than Algebraic apparent power of hybrid system * 0. Back-up Load. The installation requirements and specifications of Distribution box involve many aspects, including site selection, fixing method, wiring specifications and safety protection. This article mainly talks about the first one.



Article Content

Latest Requirements for Distribution Box Installation under the US

The latest NEC updates prioritize adaptive solutions for modern energy demands. With homes now packing solar arrays, EV chargers, and smart-home systems, distribution boxes work

Understanding Distribution Boxes: A Comprehensive Guide

The right distribution box depends on the installation environment, protection level, load requirements, and application type. By understanding the

How to Improve the Installation Quality of Distribution Boxes

Learn key methods to enhance distribution box installation quality, including location, height, wiring, and safety compliance.

Installation Standards and Safety Precautions for Distribution Boxes ...

Power distribution box and lighting distribution box should be set up separately, such as combined in the same distribution box, power and lighting lines should be set up separately.

Safety requirements of distribution box

The distribution box has the characteristics of small size, simple installation, special technical performance, fixed location, unique configuration function, not limited by

Key Points Of Installation And Collocation Of Distribution Box In ...

If they are combined in the same distribution box, power and lighting lines should be set separately. 7. The wire inlets and outlets in the distribution box and switch box shall be set at the lower bottom of

Requirements And Specifications For Installation Of

The installation requirements and specifications of Distribution box involve many aspects, including site selection, fixing method, wiring specifications

Distribution Box Installation: A Complete Guide to Safe

In this comprehensive guide, we'll cover everything you need to know about distribution box installation, from the basics to the step-by-step installation

How to Install a Distribution Box—A Comprehensive

When installing distribution boxes, you need to follow the regulations. Distribution box manufacturing and installation are governed by internationally

Outdoor Electrical Distribution Box Specifications: NEC

Complete specification guide for outdoor electrical distribution boxes covering NEC Article 312 requirements, NEMA ratings, sizing calculations, and

Electric Panel Installation Method Statement

It outlines 4 steps: 1) Pre-installation preparation including reviewing plans and ensuring safety, 2) Mounting panels and running wiring, 3) Installing circuit

IEC Standard for Power Distribution Board Design and

Designing a power distribution board is not just about placing components inside a metal box. It requires a deep understanding of international

Microsoft Word

To reduce the impedances of loops and ensure correct distribution of currents in parallel conductors, single-pole cables and isolated conductors belonging to the same circuit must be laid directly beside

PRODUCT MANUAL FOR BOXES AND ENCLOSURES FOR

Following aspects of the product shall be taken into consideration for grouping of different varieties of "Boxes and Enclosures for Accessories for household and similar fixed electrical installations" as per

Design requirements and standards for low voltage

Regularly inspect and maintain your distribution box to catch issues early and ensure safe operation. Design requirements for low voltage distribution

How to Install a Distribution Box—A Comprehensive

Whether you are an electrical contractor or a construction brigade, knowing how to properly and safely install distribution boxes is the basis of

Feasibility and Standard Requirements for Using

Flexibility and Scalability: Terminal boxes allow for easier system expansion and modifications, which is critical in evolving industrial environments. However, the

The Complete Guide to Distribution Box: Installation, Types & More

Making Smart Electrical Infrastructure Decisions Distribution boxes form the foundation of safe and reliable electrical systems. Understanding their components, installation requirements, and

IEEE 525-2007_accepted

The available constructions include cable that meets standards requirements for designation as indoor, outdoor, or indoor/outdoor. Cable is available with surrounding loose (buffer) tube, an internal

The installation requirements for the distribution box

PDF file

X3-EPS+Parallel Box (5pcs) Installation Guide-EN - SolaX Power

There are three work modes in parallel system, and your acknowledge of different inverter's work modes will help you understand parallel system better, therefore please read it carefully before operating.

Grounding System Installation Standards for Distribution Boxes and ...

Hey there! If you're working with electrical systems, you know that grounding isn't just some bureaucratic requirement—it's literally the difference between a safe, functional system and a potential disaster.

Contact Us

For more information, pricing, or custom solutions, please contact us:

Website: <https://pvprojekt.com.pl>

Email: contact@pvprojekt.com.pl

Phone: +48 512 897 346

Address: ul. Tęczowa 17, 61-001 Poznań, Greater Poland Voivodeship, Poland

This document is for informational purposes only. Specifications subject to change without notice.

