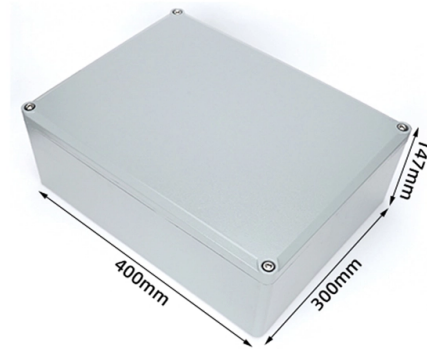


# Layer 3 Aggregation Switch Port Aggregation



## Overview

Link aggregation, also known as port aggregation or NIC teaming, is a technique used in layer 2 and layer 3 network switches to combine multiple physical links into a single logical link. This logical link provides increased bandwidth, redundancy, and load balancing. LACP (Link Aggregation Control Protocol): LACP is an industry-standard protocol (802.3ad) that dynamically manages link aggregation, provides automatic failover, and helps prevent misconfigurations by ensuring both ends of the link agree on the aggregation settings. In an aggregate link, traffic is distributed across the. The GWN7830 Series of Layer 3 Aggregation Network Switches offers 3 model options, with up to 24 SFP ports and 12 SFP+ ports, which are ideal for medium-to-large businesses and enterprises that require high-performance networks with maximum capacity and control.



## Article Content

### Link aggregation

Overview IEEE link aggregation Motivation Architecture Proprietary link aggregation Support Linux drivers Usage

By the mid-1990s, most network switch manufacturers had included aggregation capability as a proprietary extension to increase bandwidth between their switches. Each manufacturer developed its own method, which led to compatibility problems. The IEEE 802.3 working group took up a study group to create an interoperable link layer standard (i.e. encompassing the physical and data-link layers both) in a November 1997 meeting. The group quickly agreed to include an automatic configuration feature whic

### Link Aggregation Control Protocol

Layer 3 (Network Layer): Applies hashing algorithms based on parameters such as IP addresses, MAC addresses, or TCP/UDP port numbers to

### Cisco Catalyst 1300 48-Port GE 4x10G SFP+ | Managed Switch, Layer 3

Keep access traffic moving with Cisco Catalyst 1300 48-port GE and 4x10G SFP+ uplinks. Simplify aggregation, scale bandwidth, and protect uptime.

### Port Aggregation Configurations

To allow port aggregation, the basic configuration on all the ports must be consistent. The following list details the basic configuration parameters that should be consistent on all the ports: STP

### UniFi Switching

Intuitive Port & VLAN Management Global Switch Configuration Centralized Remote Management MC-LAG Multi-Chassis Link Aggregation (MC-LAG) pairs two

### Ubiquiti Aggregation, 8-Port Layer 2 Switch (USW)

Buy Ubiquiti Aggregation, 8-Port Layer 2 Switch (USW-Aggregation) with fast shipping and top-rated customer service. Once you know, you Newegg!

### Site wide outage due to USW-Aggregation and layer 3 routing

This is as suggested by the Ubiquiti documentation on Layer 3 Routing with UniFi Switches. The aggregation switch is holding the 10.255.253.2 address on rt\_v4040. The issue is that the network

### What Is an Aggregation Switch and How to Choose?

As the physical part of the aggregation layer, aggregation switches typically play a crucial part in the overall network architecture. So, what exactly is an aggregation

## Ubiquiti

UniFi Aggregation Switch is a managed Layer 2 switch with eight 10G SFP+ ports. Featuring a compact 4.7" depth and fanless design, it supports high-bandwidth

### 24-Port 10G Layer 3 Stackable Aggregation Managed

Featuring 24×10G multi-Gigabit ports + 4×10/25G SFP28 uplinks, this switch delivers flexible, high-performance connectivity. The 100M-10G auto-sensing ports

### Aggregation Network Switches | Grandstream Networks

The GWN7830 Series of Layer 3 Aggregation Network Switches offers 3 model options, with up to 24 SFP ports and 12 SFP+ ports, which are ideal for medium

### Amazon : UBIQUITI UniF Aggregation Switch Pro, 28-Port 10G

UniFi Pro Aggregation Switch The Switch Pro Aggregation is a fully managed, Layer 3 switch with (28) 10G SFP+ ports and (4) 25G SFP28 ports designed to enhance your network's switching capacity

### Zyxel CX4800-56F-DDC 48-Port Fiber Switch | L3 Aggregation, 100G

Keep aggregation layers moving with 48 x 10G/25G SFP28 ports, 8 x 100G uplinks, and dual DC power. Built for dense fiber backbones and uptime.

### Aggregation Switch | D-Link

Provides advanced Security ACLs for improved security, traffic control, and QoS, ensuring efficient and optimized networking.

### Campus Switches RG-CS86-20XS4VS2QXS-D 20-Port 10/2.5GE (SFP+), Layer 3 ...

RG-CS86-20XS4VS2QXS-D 20-Port 10/2.5GE (SFP+), Layer 3 Ruijie Core/Aggregation Switch with Cloud Management, 4-Port 25/10GE (SFP28), 2-Port 40GE Suitable for small & medium enterprise

### Layer 3 Managed Ethernet Switches

PLANET Technology offers Layer 3 Managed Ethernet Switches for enhanced network management, featuring advanced capabilities for data centers, enterprises, and telecom applications.

### How to Aggregate Ports on UniFi Switch

Aggregating ports on a UniFi switch combines multiple physical links into a single logical link, increasing bandwidth and providing redundancy. Follow these steps to create and assign

### Juniper Networks EX4100-F-48P 48 Ports PoE+ 4x10GbE New

Juniper Networks EX4100-F-48P 48 Ports PoE+ 4x Ports 10GbE SFP+ 4x Ports 10GbE Stacking Uplink Ports Layer 3 Managed Ethernet Switch. New Sealed with 1 Year Replacement Warranty

SODOLA 8 Port 10G L3 Managed Switch, 8X10G SFP+ Interface, Link ...

When you click on links to various merchants on this site and make a purchase, this can result in this site earning a commission. Affiliate programs and affiliations include, but are not limited to, the eBay

GWN78XX(P) - Link Aggregation Guide

Overview Link aggregation, also known as port aggregation or NIC teaming, is a technique used in layer 2 and layer 3 network switches to combine multiple physical links into a

Meraki Switches

Meraki MS Switches combine enterprise-grade hardware with cloud management, allowing your organization to scale effortlessly. Explore the models.

Ubiquiti UniFi Switch Aggregation | Managed Layer 2 Switch ...

The Aggregation Switch has a 160 Gb/s switching capacity with a 119.04 Mpps forwarding rate, features steel construction with a fanless design, and can be rack mounted using the included kit. Its front

Grandstream GWN7832 12 Port 10G SFP+ Layer 3 Aggregation

GWN7832 The GWN7830 Series are Layer 3 aggregation managed switches that allow enterprises to build scalable, secure, high performance and smart business networks that are fully manageable and

Arista DCS-7124SX-R 24 Ports 10GbE Ethernet SFP+ Refurbished

The Arista DCS-7124SX-R is a high-density 10 Gigabit Ethernet switch engineered for enterprise networking environments, virtualization infrastructures, aggregation layers, and high-performance

## Contact Us

For more information, pricing, or custom solutions, please contact us:

Website: <https://pvprojekt.com.pl>

Email: [contact@pvprojekt.com.pl](mailto:contact@pvprojekt.com.pl)

Phone: +48 512 897 346

Address: ul. Tęczowa 17, 61-001 Poznań, Greater Poland Voivodeship, Poland

This document is for informational purposes only. Specifications subject to change without notice.

