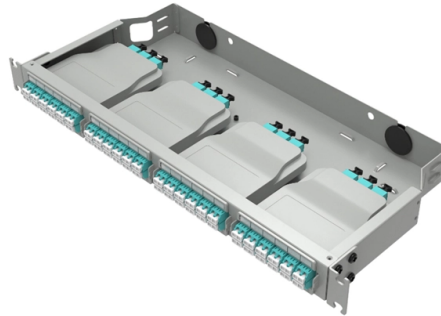


Is one core switch enough



Overview

Having a core switch always depends on the network. On small networks with a couple of servers and a few clients, there's no actual need of a core switch. In medium/large. Should I have one 24 port switch in my loft and have multiple ethernet cables running to each room or have a smaller switch in my loft, 1 cable running to each room and then a switch in each room. Positioned at the top of the three-layer network architecture, it functions like a senior management team in an organization, tasked primarily with efficiently. A core switch is a high-performance network switch located at the core layer of the network architecture. It usually has powerful processing capabilities, high. Generally speaking, core switches are Layer 3 switches, which can support various network protocols such as routing protocol/ACL/load balancing and have rich functions.



Article Content

Core layer | FortiSwitch 7.4.0 | Fortinet Document Library

With the use of a core layer, each aggregation switch only needs 2x100-GbE links, and the core layer is the only place where you need large numbers of 100-GbE ports.

How Many CPU Cores Do I Need in My Computer?

Processor core counts keep going up, but do you really need to fork out the extra cash for 16 cores? How many CPU cores do I need? Well,

Differences Between the Core Switch and Normal

A core switch is not a type of switch, but a switch placed at the core layer (the backbone of the network). Generally, large-scale enterprise networks

What is a Core Switch | Functions and Difference over Normal Switch

The major difference between core switches and ordinary (aggregation) switches is their network performance. Core switches as expected are designed to be quicker than aggregation

I need to talk about \$KRKNF. The small cap underwater drone stock ...

I specifically did this so I had enough capital (30%) to play with other stocks as I never went into the finance media sector hanging it all on one trade. Some of the other stocks I concentrated into

Core Switch

Now imagine 10 such switches each of which could generate 1 gig of data (if there is one link, or 2 gig of data if etherchannel is used to bundle two uplinks). So the core switch should atleast

Question regarding Core switch : r/networking

Do you want the switches to be the core for routing or the firewall? Later 2 is fine for most cases but sounds like you want to build out the switches as a core.

do i actually need a "core" switch? : r/networking

You can do some basic LB by having one switch own individual LW GWs. Read up it is a common use case. As for Hairpinning: your FW/edge routers are usually much slower backplanes than switches. As

Starting to design a home network, how many switches do I need

Generally speaking, you're better off running cables to 1 big switch than having a bunch of smaller switches, because then your devices don't need to share bandwidth back to the main switch.

Understanding Core Switch: What It Is and How to

In the realm of system networking, three key types of switches are frequently mentioned: access switches, aggregation switches, and core switches.

What is Core Switch and How to Choose-QSFPTEK

This article will explore the core switches and provide valuable insights on how to choose the ideal core switch for your network needs. Join us

How to Choose a Core Layer Switch?

As the core backbone layer of the entire network architecture, the core layer bears the traffic transmission of the entire network, so the core layer has high requirements for core switches and

Core Switches

Is there something ultimately different in a core switch vs the other switches? What is a core switch? Is there ONLY one core switch in a network? If there are more are they used

Planning for a Core Switch Deployment

Hello All, I am planning for a core switch requirement is it should connect 2000 access ports in the distribution / access layer and scale in future. I have the option for using 9500-48 port (in

Difference between a core switch and "normal" switch?

Core switches have much higher limits: on number of VLANs, MAC addresses, ACL number and complexity. It's also commonly a chassis-based switch, as this allows simpler fault correction and

Pro/Con core switch

Just wondering if having a core would provide any benefits other than freeing up ports on the server access switch. We were looking to do some L3 stuff such as routing and ACLs, but we can

FS Community

Hier sollte eine Beschreibung angezeigt werden, diese Seite lässt dies jedoch nicht zu.

How to Choose the Right Core Switch for Enterprise

Learn how core switches for enterprise networks and LAN campus networks function in the hierarchical internetworking model and how to choose

How to determine the number of cores required when using fiber optic?

If the cost is considered, the entire line can also be redundant with 1-2 cores. For example, if you have three optical fiber access switches, you need There are three cores (four cores are actually used),

CPU Cores vs Threads Explained | ServerMania

Comprehensive guide to CPU cores vs threads. Learn the difference, performance impact, and how to choose the right configuration for gaming, development, and servers.

Core Switch Explained: Key Functions and Benefits

Core switches sit at the heart of a network's structure. In smaller networks, you usually find one core switch, sometimes two for backup. They are essential for moving data through the

Advice on core switch setup : [r/sysadmin](#)

For smaller deployments, the goto Cisco configuration is a pair of 4500-X switches in a VSS configuration with 2960-X switches for access layer. The VSS allows two switches to be managed as

Do I need a core switch?

Core switch is an essential component of a network. If you have a complex network of multiple switches and computers, you need a core switch to

Why does one CPU core work harder than others?

We've created this guide to explain why one CPU core will generally work harder than the rest, and why this shouldn't be cause for concern for your PC. One core to rule them all

Understanding Core Switch: What It Is and How to Choose the Right

It's advisable to choose a core switch with link aggregation capabilities to ensure efficient transmission of traffic from the aggregation switch to the core switch.

Contact Us

For more information, pricing, or custom solutions, please contact us:

Website: <https://pvprojekt.com.pl>

Email: contact@pvprojekt.com.pl

Phone: +48 512 897 346

Address: ul. Tęczowa 17, 61-001 Poznań, Greater Poland Voivodeship, Poland

This document is for informational purposes only. Specifications subject to change without notice.

