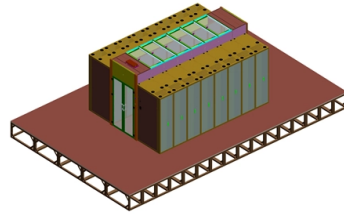


How to mark lines on a cable tray tee



Overview

You can specify vertical or 45-degree lines and the line spacing to use. In the Electrical workspace, click Manage tab Preferences panel Cable Tray . To specify a cable tray pattern, under Cable Tray Pattern, select a type of line pattern, and enter a value for. The B-Line series Cable Tray Manual was produced by our technical staff. We recognize the need for a complete cable tray reference source for electrical engineers and designers. The following pages address the 2014 National Electrical Code® requirements for cable tray systems as well as design. In this video, we'll cover the essential steps of marking and cutting cable trays. A rung spacing of 6 to 9 inches (150 to 230 mm) is preferable when the cable tray cont d for instrumentation and control applications that require. How to design cable tray?

Most projects are roughly defined at the start of cable tray design. For projects that are not 100 percent defined before design start, the cost of and time used in coping with continuous changes during the engineering and drafting design phases will be substantially less. You can specify labels or flow arrows to be added to cable tray runs as you draw them. Wire Basket Overhead Cable Tray Routing System contributes to effective space utilization.

Article Content

Cable Tray Spacing Standards for Installation and Safety

The Importance of Cable Tray Spacing in Electrical Infrastructure Cable tray spacing is a critical aspect of electrical infrastructure, influencing both

Cable Tray Construction Pt. 2: marking and cutting.

In this video, we'll cover the essential steps of marking and cutting cable trays. We'll explore: 1. Measuring and marking: Accurate measurement and marking techniques for cable...

Master Cable Tray Installation: A Professional Step-by

Learn how to install cable trays for large-scale projects with our professional, step-by-step guide covering industry standards, safety protocols,

Complete cable tray manual for electrical engineers and

Cable tray wiring systems are well suited for computer aided design drawings. A spread sheet based wiring management program may be used to control the

Complete cable tray manual for electrical engineers and

Complete cable tray manual for electrical engineers and designers (on photo: power cable management ladder tray systems assembled aluminum cable tray ladder

How to Read Tray Cable Markings and Labels?

The answer is affirmative, provided that the correct type of tray cable is selected. It is essential to recognize that not all tray cables possess the same characteristics, and their ability to

To Specify Annotation for Cable Tray

You can specify labels or flow arrows to be added to cable tray runs as you draw them. You can also specify the hatch pattern to apply. You can specify vertical or

Cablofil: How to Make a Tee in Wire Mesh Tray

Learn how to make a 90 degree tee using the EZT 90 Kit. The kit contains all hardware for one tee or two 90 degree bends. For more information, visit

CABLE TRAY SYSTEMS GUIDE

Cable Tray Systems Guide HUBBELL Hubbell Wiring Device-Kellems and Hubbell Premise Wiring are divisions of Hubbell Incorporated, a U.S. headquartered manufacturer with over 130 years of

Full cable tray systems specification document

B. Cable tray systems are defined to include, but are not limited to straight sections of [ladder type] [trough type] [solid bottom type] [channel type] cable trays, bends, tees, elbows, drop-outs, supports

WIRE MESH TRAY TECHNICAL GUIDE

This depends on the type of data cable, the number of power cables and the type of cable tray. Otherwise, the distance of 8" provides a simple and sensible rule of thumb.

A Guide to Cable Tray Accessories and Their Functions

Explore a detailed guide to cable tray accessories and understand their uses in ensuring safety, stability, and efficiency in electrical system

Cable Tray and Trunking Installation Guide

This document provides a method statement for installing cable tray or trunking systems. It outlines the key steps, which include evaluating materials, properly

Cable Tray Technical Guide A practical guide to product selection and ...

In designing supports for a cable tray system, consideration should be given to the loads associated with future cable additions and any additional loading that may be applied to the cable tray system (e.g.,

HOW TO MAKE TEE IN YOUR CABLE TRAY / PAANO MAG FABRICATE NG TEE

How to bend 90 degree of cable tray accurate to joint and support with 22.5 degree offset • HOW TO BEND 90 DEGREE OF A CABLE TRAY AC...

Wire Basket Overhead Cable Tray Routing System Application Guide

The Wire Basket Overhead Cable Tray Routing System is composed of pathways, splices, mounting brackets, and accessories that allow the system to be configured for a wide range of applications and

Kable Kontrol Cable Tray Reducer Tee and Vertical Bend instructions

Reducers and Tees Wire Mesh Cable Tray Reducer and Tee Junction Instructions
CABLE TRAY CUTTING & BENDING GUIDES CONFIGURING CABLE TRAYS FOR
INSTALLATION Reducers

Cable tray tee and tee cover designing (Autocad Eletrical)

Tee covers are designed to fit securely over the cable tray tee, ensuring that the cables inside are shielded from dust, moisture, and potential

Cable Tray Tee - G-STEEL TRADING

A cable tray tee. Usage: is used to complete the whole project as it is one of the cable tray accessories, that make the cable go through all available space easily

Kable Kontrol Cable Tray tees and x junction instructions

Tees and X Junctions Wire Mesh Cable Tray Reducer and Tee Junction Instructions
CABLE TRAY CUTTING & BENDING GUIDES CONFIGURING CABLE TRAYS FOR
INSTALLATION Horizontal Tees

Cable tray manual

Instead of large conduits, cable channel may be used very effectively to support cable drops from the cable tray run to the equipment or device being serviced and is ideal for cable tray runs involving a

Cable Tray Fitting

Cable Tray Fitting - Tee NOTE : Equal or un equal tees can be supplied. When ordering state widths W1xW2xW3

Connecting Cable Trays: Your Guide to Secure and

Learn common methods for connecting cable trays safely and efficiently. Our guide covers splice plates, quick-connects, and key tips for secure

Trunking Cutting Techniques Guide | PDF

The document provides instructions for forming various bends and joints in electrical trunking and cable trays. It describes: 1) How to mark and cut a right-angle

Cable Tray Design and Standards Guide

1. The document outlines codes and standards that must be followed for design and construction of cable trays and their components. Standards listed include those

Perfect Gusset Tee Every Time? This Trick Works!

How to Master a Gusset Tee in electrical Cable Tray. Make Tee sectioned piece or add a gusset to any measurement in electrical cable tray. How to calculate the perfect gusset tee every time.

Level 2 EFK Manual

Mark square and cut one end of the cable tray, taking care to meet the requirements of the technical data. Measure, mark and cut the long section "A" to the dimension shown. Measure, mark and cut out

Cable Tray Tees: Pre-Galvanised Medium Duty Equal Tee

Cable Tray Tees provide a smooth, reliable way to branch out your cable runs while keeping everything organised and secure. Whether you're directing cables to different sections of a building or creating

Wire Mesh Cable Tray Tee | Pratik Cabletray System Pvt. Ltd. Pune ...

A wire mesh cable tray tee is a fitting used to create a branch in a wire mesh cable tray system, allowing cables to be routed in three directions. Shaped like the letter "T," it provides a secure connection

Contact Us

For more information, pricing, or custom solutions, please contact us:

Website: <https://pvprojekt.com.pl>

Email: contact@pvprojekt.com.pl

Phone: +48 512 897 346

Address: ul. Tęczowa 17, 61-001 Poznań, Greater Poland Voivodeship, Poland

This document is for informational purposes only. Specifications subject to change without notice.

