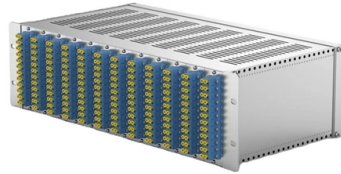


How to Make a Fiber Optic Terminal Box



Overview

This guide walks through a practical, real-world installation process used in FTTH deployments. It covers not only mounting and splicing, but also how to plan port capacity, manage slack, label correctly, and avoid common installation mistakes. Installing a fiber optic termination box is one of those jobs that looks simple on paper, but it's easy to do poorly in the field. The following steps provide a detailed installation guide for fiber termination boxes: Before starting the installation, you will need the. A Fiber Termination Box, also known as a Fiber Distribution Box, is a crucial component in fiber optic networks. It serves as a termination point for optical fibers, providing a secure and organized space for connecting and managing fiber optic cables. It functions as a junction between the incoming fiber cable and the outgoing customer-side fiber cable, where one fiber can be spliced, patched.

Article Content

Types of Fiber Optic Terminal Boxes: How to Choose

The article discusses choosing fiber optic terminal boxes, covering types, materials, costs, and best practices for efficient network performance. It

Ensuring Success in Fiber Termination Box Installation –

For more detailed information about fiber termination boxes and their installation, including wall-mounted options, check out our guide on fiber

All You Need To Know About Fiber Termination Boxes:

In this blog, we will discuss the two types of fiber optic cables and the role of a simple yet essential piece of equipment in the fiber laying procedure—the,

Fiber Termination Box Installation & Maintenance Guide

Learn everything about fiber termination boxes—types, installation steps, and maintenance tips to ensure reliable fiber optic network performance.

Fiber Terminal Boxes: What They Are and Why You

A fiber terminal box, is a device used in fiber-optic communication networks to terminate, splice, and distribute optical fibers. It is a small enclosure

FTTH Terminal Box and Optical Accessories: A Comprehensive Guide

Functionality of FTTH Terminal Boxes Protection and Organization: One of the primary functions of FTTH terminal boxes is to provide a secure and organized housing for fiber optic cables.

Fiber Internet Installation: Step-by-Step Guide (2026)

The optical network terminal (ONT) is the critical component that converts fiber optic signals into data your devices can use. Post-installation

How to Install a Fiber Termination Box

Fiber termination box is an essential component in fiber optic communication systems that facilitates the routing and protection of fiber optic

How to Install Fiber Optic Cables

Fiber optic cables allow you to connect to the internet. Follow these steps to install fiber optic cables in your home.

How to install fiber terminal box?

In short, when installing a fiber optic terminal box, it is necessary to operate very seriously and carefully, and follow relevant regulations and safety standards to

Guide of Fiber Optic Terminal Box

Fiber optic terminal box is a product designed for different scenarios in FTTH construction, such as primary or secondary splitting.

Fiber Termination Boxes: A Beginner's Guide to

By understanding the types, installation steps, and maintenance practices, beginners can embark on the journey of building and sustaining reliable

Fiber access terminal installation tutorial, FTTH outdoor gel sealed ...

You are watching the video tutorial of aerial installation of fiber optic termination box FODB-8. Visit our web for more information:

101 Guidelines for Fiber Termination Box

Fiber termination box (FTB), also known as optical terminal box (OTB), generally refers to a distribution box specially designed for fiber cable

What Is the Role of a Fiber Optic Terminal Box in FTTH?

Discover the role of the Optical Fiber Terminal Box (FTB) in FTTH networks. Learn how rack-mount optical fiber terminal boxes in MDU risers and

Understanding Fiber Optic Junction Boxes: A

8. Conclusion In conclusion, fiber optic junction boxes are indispensable components in modern communication networks. Whether you're

Fiber Terminal Box vs Junction Box: Key Differences

Compare fiber terminal box vs junction box in functions, applications, and installation. Learn which suits FTTH fiber vs electrical wiring.

The Ultimate Guide To Choosing The Right Fiber

With a compact rack or wall mounting design, the Fiber Termination Box is a space-saving solution for fiber optic installation, especially when it is not

Fiber Termination Boxes: A Beginner's Guide to

In the dynamic landscape of modern communication, Fiber Termination Boxes (FTBs) play a pivotal role in ensuring the efficiency and

Illustration of How to Connect the Terminal box in FTTH

The outdoor optical fiber cable is connected to the terminal box. The purpose is to fuse the optical fiber and the pigtail in the optical cable, and lead it

FTTH Distribution Terminal Box, FTTH Fiber Optic

Fiber Optic Termination Box is used in the end termination of drop cables in residential buildings and villas, to fix and splice with pigtailed. UnitekFiber supplies

How to install fiber terminal box?

Test the connection: Before testing the connection, please make sure that the fiber optic terminal box is powered on and that the router and other network devices

The Types of fiber Optical Terminal Boxes and How to

A box that comes with clear installation instructions and is easy to access for maintenance will save time and effort in the long run. By considering

How to Install a Fiber Optic Termination Box (FTTH Steps)

Learn how to install a fiber optic termination box step-by-step for FTTH projects. Covers mounting, splicing, routing, labeling, and testing for indoor/outdoor use.

Contact Us

For more information, pricing, or custom solutions, please contact us:

Website: <https://pvprojekt.com.pl>

Email: contact@pvprojekt.com.pl

Phone: +48 512 897 346

Address: ul. Tęczowa 17, 61-001 Poznań, Greater Poland Voivodeship, Poland

This document is for informational purposes only. Specifications subject to change without notice.

