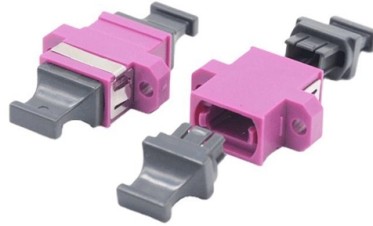


H3C switch optical port has no light



Overview

H3C recommends disabling STP on the port, or configuring the port as an edge port if the port is connected to a terminal device. If the issue persists, contact. To prevent a failure from causing loss of configuration, save the configuration each time you finish configuring a feature. Figure 1 Schematic Diagram of Optical Module Connected to Switch 1. For this, first I tried to upgrade the bootrom, as described in the manual procedure. Then the switch has been disconnected and since then, it is impossible for me to connect to the switch with the serial. Selected ports Contact H3C Support Solution To resolve the issue: Verify that all physical connections are correct. This makes sure all member ports you assign to the aggregation group can become Selected ports. If the system is normal after the Switch is. H3C S5810 series Ethernet switch is a high-performance Gigabit Ethernet switch product independently developed by (Huasan) Co.

Article Content

Optical Transceiver Manufacturer,H3C Switch

Use the special AM User-bind command to complete the binding between IP, MAC address and port. The command is as follows: am user-bind ip-address

H3C Devices CLI Reference

Open the terminal software on the PC to create a serial port terminal, as shown in Figure 3. Figure 3 Creating a serial port terminal As shown in Figure 4, enter device name Switch, select port COM1,

H3C Fixed-Port Campus Switches Troubleshooting Guide-6W104

Download Book H3C Fixed-Port Campus Switches Troubleshooting Guide-6W104-book.pdf (286.17 KB) Released At: 27-10-2023 Page Views: 10957 Downloads: 964

H3C S6300 SERIES TROUBLESHOOTING MANUAL Pdf Download

View and Download H3C S6300 Series troubleshooting manual online. S6300 Series switch pdf manual download.

H3C S5560-EI SERIES TROUBLESHOOTING

View and Download H3C S5560-EI Series troubleshooting manual online. S5560-EI Series network router pdf manual download.

H3C Wireless Products Troubleshooting Guide-6W101

For an AP that has a console port, log in to the device through the console port and verify if the AP can start up correctly. Figure 6 shows the diagnostic process of

H3C All-Optical Network Technology White Paper-6W100

In contrast, the EPON-based POL solution leverages the EPON OLT's enhanced Ethernet forwarding and switching capabilities. iOptic network devices H3C provides an extensive array of iOptic Ethernet

H3C S6800 Switch Series Troubleshooting Guide

No part of this manual may be reproduced or transmitted in any form or by any means without prior written consent of New H3C Technologies Co., Ltd. The information in this document is subject to

H3C S6300 SERIES TROUBLESHOOTING MANUAL Pdf Download

If there are cooling measures to maintain the switch operating temperature below 60°C (140°F), the switch can be used temporarily. If the issue persists, contact H3C Support.

H3C S6805 SERIES TROUBLESHOOTING MANUAL

View and Download H3C S6805 Series troubleshooting manual online. S6805 Series switch pdf manual download. Also for: S6825 series, S6850 series, S9850 series.

H3C S5560S-EI Series Troubleshooting Manual

CRC error has occurred or that no system software image is available during the BootWare loading process, reload the system software image on the BootWare menu and configure it as the current

Switches-H3C

Good quality and firm structure In recent years, the IoT has developed rapidly. For the interconnection of outdoor scenarios, industrial switches are required. H3C industrial switches can operate in -40°C -

04-Chapter 4 Connecting Your Switch to the Network

The 10/100Base-TX and 1000Base-T ports of the H3C S7500E switches use RJ-45 connectors and support MDI/MDI-X auto-sensing. Use category-5 twisted pair cables or above to connect the

H3C S6805 SERIES TROUBLESHOOTING MANUAL

If the transceiver module is not operating correctly, replace it with an H3C transceiver module that matches the fiber port. For more information about transceiver

How To Read Optical Module Information On H3C Switches

The following uses the Moduletek QSFP-40G-LR4 module connected to an H3C S6820 switch as an example to introduce how to read information of the connected optical module on an H3C switch.

H3C Fixed-Port Campus Switches Troubleshooting Guide-6W104

Use the virtual technologies configuration guide for the switch series to verify whether the switches in the switch series are grouped for IRF compatibility. If they are grouped, make sure the

Optical Transceiver Manufacturer,H3C Switch

H3C switch configuration description: Because of the use of the port learning function, it is necessary to set the number of MAC learning of the port to 0 after

How To Turn Off Alarms For Third-Party Modules On H3C Switches

When a third-party optical module is installed on an H3C switch, the module can normally link up, but port logs will display alarm messages indicating an uncertified non-H3C module.

H3C S6800 SERIES SWITCH TROUBLESHOOTING MANUAL

View and Download H3C S6800 Series troubleshooting manual online. S6800 Series switch pdf manual download.

H3C S5120

Please connect your serial cable first before restarting the switch, you should see the switch booting and the keys you need to press to get into the boot menus.

Contact Us

For more information, pricing, or custom solutions, please contact us:

Website: <https://pvprojekt.com.pl>

Email: contact@pvprojekt.com.pl

Phone: +48 512 897 346

Address: ul. Tęczowa 17, 61-001 Poznań, Greater Poland Voivodeship, Poland

This document is for informational purposes only. Specifications subject to change without notice.

