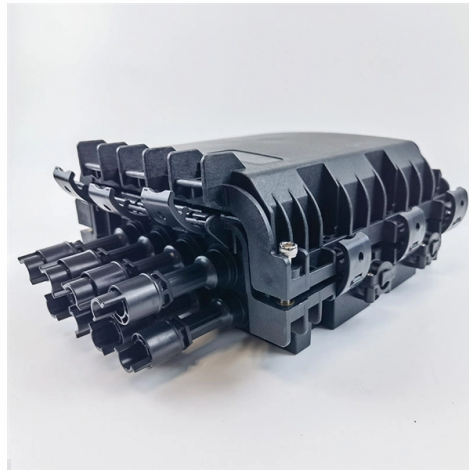


Georgian power distribution box inspection



Overview

As needed, inspect and torque-test bolted electrical connections to the required values. Examining each panel for rust and evidence. With services covering assessment, verification, inspection, auditing, testing and training, SGS is your first choice of partner to ensure that your power distribution network operates safely, sustainably and reliably and in compliance with regulations. Resolution on the Procedures for the Protection of Electricity Grid Linear Facilities and Establishment of Their Protection Zones 5. Administered primarily through the Georgia State Electrical Division and local jurisdictional authorities, inspections are a. This utility procedure classifies maintenance tasks for miscellaneous electric overhead (OH) and underground (UG) equipment, including capacitor banks, fault indicators, interrupters, reclosers, voltage regulators, Supervisory Control and Data Acquisition (SCADA) and Primary Distribution Alarm and. Low-voltage intrusive switchboards regulate and distribute power in buildings and facilities. LV intrusive switchboards accept power from the utility & generator & distribute it to building circuits.



Article Content

Easements for Vegetation Management | Georgia Power

Understand the importance of easements in Georgia Power's vegetation management program and how they help improve electrical reliability.

Georgian Power Equipment | LinkedIn

Georgian Power Equipment | 87 followers on LinkedIn. Professionals specializing in transformer monitoring, testing, parts supply, meter testing and smart grid monitoring | We help you design,...

Power Distribution | SGS Georgia

With services covering assessment, verification, inspection, auditing, testing and training, SGS is your first choice of partner to ensure that your power distribution network operates safely, sustainably and

Georgian Transmission

Georgian Power System Challenges Reduced flexibility – insufficient reserve capacity
Stalled pipeline of new generation projects – leading to

Legislation

Annulment of the Temporary Procedure for Conducting Comprehensive Testing for the Purpose of Commissioning Type B Power Plants.

Georgia Procurement Manual

The Georgia Procurement Manual provides references to applicable Georgia law governing state government purchasing. Although every effort has been made to assure the accuracy of the material

Legislation

Legislation Legislation Documents 1. Electricity (Power) Market Rules 2. Grid Code 3. The main directions of state policy in the energy sector 4. Resolution on the Procedures for the Protection of

Regular maintenance checklist: ensuring safe and reliable operation of ...

Hey there! If you're responsible for maintaining electrical systems, you know that distribution boxes are the unsung heroes of power management. These metal workhorses silently

PowerPoint Presentation

Compliance Inspection In the process of checking conformity the Distribution Licensee is obliged to: Check enforcement of draft coordinated in accordance with conditions and conformity with current

electrical distribution box preventive maintenance check list

2. Internal Inspection Open the distribution box and check for dust and debris accumulation. Inspect circuit breakers for proper operation. Ensure all connections are tight and secure. Look for any signs

Georgia Power Electrical Service Guide for Builders

Georgia Power's guide for builders on electrical service and metering installations. Includes new service requests, temporary services, and builder resources.

PowerPoint Presentation

The Distribution Licensee shall ensure to maintain the average load in distribution network (substation transformers, electricity lines) within 70% of nominal capacity

Establish New Connection

11. Customer schedules inspection In areas where electrical inspection is provided, the Public Service Commission requires that all wiring and equipment in or upon

Distributed Generation Interconnection Construction ...

Distributed Generation Interconnection Construction Guidelines When the owner or lessee of a distributed generation resource ("Facility") seeks to interconnect its Facility with the Georgia Power

electrical distribution box preventive maintenance check list

Inspect for any physical damage to the enclosure. Ensure that all labels and warning signs are legible. Examine for any signs of overheating or arcing. Verify that the box is securely mounted and that

Grid Improvement Projects Overview

Explore Georgia Power's grid projects across the state, including transmission, distribution, substation, easement, and meter equipment upgrade work

Georgian State Electrosystem

Georgian State Electrosystem (GSE) is the single Electricity Transmission System Operator (TSO) acting in Georgia, providing the overall coordination of the

Factory Audits for Distribution Box Suppliers: Key Inspection Points ...

Today, we'll break down exactly what separates the best from the rest. Forget cookie-cutter checklists - we're talking about the real, practical inspection points that determine whether a distribution box will

Checklist for Preventive Maintenance of Electrical

This preventative maintenance checklist ensures electrical distribution system dependability and safety. From circuit breakers to

SERVICE RULES AND REGULATIONS

The Customer Generator has submitted to the Cooperative a copy of the final, signed, jurisdictional approval (Permit) for the customer's distributed generation facility from local

POWER DELIVERY BULLETIN

As a Georgia Power Company Customer with a Non-Exporting Generator (NEG), I confirm that I have read and am in agreement with the requirements and responsibilities set forth in Georgia Power

Electric Distribution Maintenance Requirements for Miscellaneous

4 Distribution equipment located inside a substation follows the same inspection and testing cycle as equipment located outside a substation, using equipment sheets in the relevant procedure.

Georgia State Minimum Standard Electrical Code 2020

UpCodes offers a consolidated resource of construction and building code grouped by jurisdiction

Power Distribution & Delivery | Georgia Power

Distribution We rely on a sophisticated system to deliver electricity all across our state called "the grid". To have reliable power, all of the grid, generating stations,

Georgia Power | Reliable Energy for a Growing Georgia

Georgia Power provides clean, safe, reliable, and affordable energy to over 2.8 million residential and business customers across Georgia.

KEY BULLETIN POINTS:

KEY BULLETIN POINTS: THIS GUIDE OUTLINES MINIMUM REQUIREMENTS FOR CONNECTION OF CUSTOMER-OWNED EMERGENCY AND STANDBY GENERATORS (ESG) TO THE

Distribution Test Policy

Distribution Test Policy: This Distribution Test Policy. Electric System: The network of electric generation, transmission, or distribution facilities owned or operated by GPC or other electric utilities.

Georgia Electrical Inspection Process Explained

Georgia's electrical inspection process governs how newly installed, modified, or repaired electrical systems are reviewed and approved before energization or occupancy.

Contact Us

For more information, pricing, or custom solutions, please contact us:

Website: <https://pvprojekt.com.pl>

Email: contact@pvprojekt.com.pl

Phone: +48 512 897 346

Address: ul. Tęczowa 17, 61-001 Poznań, Greater Poland Voivodeship, Poland

This document is for informational purposes only. Specifications subject to change without notice.

