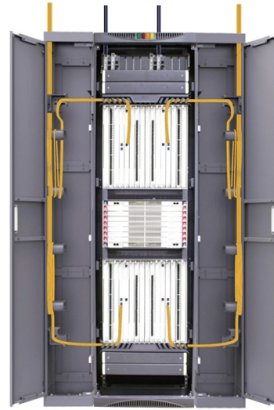


Firewall Optical Module Selection



Overview

When purchasing third-party SFP optical transceivers, compatibility is often the most parameter users care about. Before placing your order, you can check the vendors' optics testing center to confirm whether the SFP module is compatible with your devices. Or just ask the sales rep for details about the SFP transceiver compatibility. For more detailed information about SFP transceiver module, you could read: How Many Types of SFP Transceivers Do You Know Usually, SFP ports use in Ethernet switches, routers, firewalls and NIC cards. SFP modules connect devices to fiber or copper cables like Cat5e. Other types of SFP optical transceivers like 3G video SFP and 12G video SFP. They. Understanding the different types of SFP modules is crucial to making informed decisions for your business, here's usual version description: 1. SFP (Small Form Pluggable) SFP modules are the compact successors to GBIC modules, offering half the size and increased port density. They support transmission rates of 155M, 1.25G, and 2.5G, primarily used. DDM, DOM and RGD are common in SFP transceiver names, which makes users confused. DDM (Digital Diagnostics Monitoring) lets users check SFP modules' real-time parameters. Such as input power, output power and temperature. DOM (digital optical monitoring) is like DDM, allowing users to check parameters of the SFP. RGD means the SFP is a "rugged" grade. There are three main differences between Singlemode SFP (SMF SFP) and multimode SFP (MMF SFP) ① Fiber □ Singlemode fiber has a smaller core than multimode fiber, and it allows unlimited bandwidth and lower loss. While multimode fiber can propagate multiple modes of light. ② Transmission distance. Singlemode SFP transceiver is often used in long-run.

Article Content

SFP Module: What's It and How to Choose It?

What is an SFP module and its importance? Understanding SFP Modules and Their Importance in IT SFP modules, or Small Form-factor

How To View Port Status And Optical Module Information On PALO

The following is an example of accessing the Palo Alto PA-850 firewall with a SFP-10G-LR optical module of Moduletek to show you the specific operation of reading the information of the

SFP, SFP+, SFP28, QSFP+, QSFP28: Choosing the Right

SFP, SFP+, SFP28, QSFP+, and QSFP28 modules are often seen as simple accessories. They represent the physical layer that allows firewalls, switches, and servers to communicate with

Network Security Modularity | WatchGuard

How Does Modularity Work? WatchGuard Firebox appliances, like all firewalls, are limited by the line speed of available network ports on the appliance. Adding

What is SFP Module and How to Choose it?

SFP modules are versatile enough to operate with both copper Ethernet cables and optical fiber cables. On the optical fiber side of things, SFP

How do i check my sfp details in palo alto?

Ensuring Compatibility: Not all SFP modules are compatible with every device. Checking the details can confirm compatibility with your Palo Alto Networks

What Is an SFP Module and How to Choose It? (2026)

In today's high-speed networking environments, Small Form-factor Pluggable (SFP) modules play a crucial role in ensuring flexible and scalable fiber

Understanding SFP Port: A Comprehensive Guide

Challenges and Solutions in Using SFP Port with Fiber Optic Challenges such as mismatched wavelengths, connector type incompatibilities,

The Ultimate Guide to SFP Modules (2026): Types,

Confused by SFP vs SFP+? Read the definitive 2026 guide on SFP modules. We explain Single Mode vs Multimode, DDM diagnostics, and how to choose the right

What is an SFP Optical Module? The Complete Guide to

The complete technical guide to SFP optical modules (SFP, SFP+, SFP28). Understand the core function, compare data rates (1G to 25G), learn

Selecting the Right SFP Module for Single-Mode and

Learn how to select the right SFP module for single-mode and multimode fiber by understanding wavelength, distance, compatibility, and

10G Optical Module Selection Guide: LRM, SR, LR, ER, ZR

In the construction of high-speed networks, 10G optical modules are core components of data centers, enterprise networks, and telecommunication networks. However, facing the numerous

How to Choose SFP Module for Compatibility, Speed,

Learn how to choose the right SFP module based on compatibility, speed, fiber type, wavelength, and distance. Practical guide for engineers and IT

Transceivers Explained: SFP vs SFP+ vs SFP28 vs QSFP+ vs QSFP28

In this guide, we break down the differences between these modules and help you make the best decision for your infrastructure—whether you're upgrading a legacy system, increasing the

How to Install and Remove Optical Modules Safely

Install optical modules safely with ESD protection, proper handling, and dust control. Follow these steps to avoid damage and ensure network reliability.

What Is a Firewall? Definition and Types of Firewall

Learn what a firewall is, why it is important, how it works, and firewall best practices. Learn how a firewall can ensure the data is harmless and prevent data from being

100G QSFP28 Optical Module Selection Guide: Medium to Long

How to Choose 100G QSFP28 Optical Module When you consider choosing a 100G QSFP28 module, you first need to consider your transmission distance. When your transmission

How to choose the right SFP module ?

Discover how to choose the right SFP module for your fiber optic network in 5 key steps: compatibility, environment, fiber type, wavelength, and data rate.

What is SFP Module and How to Choose it

On the fiber optics side, there are single mode SFP module and multimode SFP module, which allows users to select the appropriate transceiver

SFP Optical Module Selection Guide for 2025: Key

Explore our comprehensive SFP optical module selection guide for 2025. Learn about crucial factors like data rate, distance, fiber type, and

The Most Comprehensive Guide Of Optical Modules

Explore the ultimate guide to optical modules. Learn types, functions, performance metrics & how to choose the right module for your fiber network.

Firewalls

This includes a 3-year Essential Edition subscription with advanced firewall, VPN, and edge computing capabilities. The Hirschmann EAGLE40-4F is a field-level

Firewall Optical Module Matching Solution

Firewall is one of the most important network protection equipment, with very strong anti-attack immunity, it can play an important role in enterprise

Fortinet NGFW Ordering Guide

NGFW/Perimeter Firewalls Welcome to the Fortinet FortiGate Next Generation Firewalls (NGFW) Ordering Guide. This guide is designed to help customers understand and navigate the various

SFP Modules: Types, Selection Guide & Applications

This guide demystifies SFP modules, exploring their design, types, key differences from related modules (like SFP+, SFP28, and QSFP), and actionable tips for selecting the right one for

What is an SFP Port? The Ultimate Guide to Network Flexibility

Introduction An SFP port (Small Form-factor Pluggable) is a compact, hot-swappable interface used in network switches, routers, and firewalls to support fiber optic or copper networking

6 firewall selection criteria to purchase NGFWs | TechTarget

Next-generation firewalls have become a key security component for enterprises. This article focuses on six firewall selection criteria, like features, performance and cost analysis, to

Contact Us

For more information, pricing, or custom solutions, please contact us:

Website: <https://pvprojekt.com.pl>

Email: contact@pvprojekt.com.pl

Phone: +48 512 897 346

Address: ul. Tęczowa 17, 61-001 Poznań, Greater Poland Voivodeship, Poland

This document is for informational purposes only. Specifications subject to change without notice.

