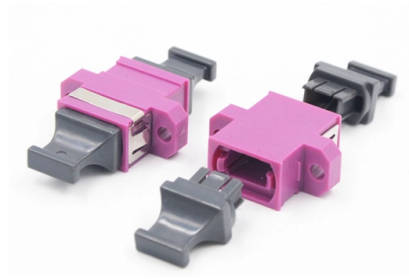


Cable tied to utility pole



Overview

A guy wire is a lightweight galvanised cable that is used to provide stability to poles or towers. It is also referred to as guy strand, guyed wire, guy line, guy rope, or guy cable, which are used interchangeably. Utility pole wires play an important role in the ecosystem and have become an essential part of the energy system within cities and the countryside. A utility pole, commonly referred to as a transmission pole, telephone pole, telecommunication pole, power pole, hydro pole, telegraph pole, or telegraph post, is a column or post used to support overhead power lines and various other public utilities, such as electrical cable, fiber optic cable. These cable stability structures are necessary throughout various industries, specifically for utility services. It's essential to know key points regarding guy wire installation to ensure you choose the right products for the job. Additionally, you should note which types of hardware are necessary. Simply put, it's a tensioned cable that anchors utility poles to the ground or other structures, ensuring they remain steady against various forces like wind and weight from cables.



Article Content

7 Wires Found on Utility Poles

There are seven types of wires commonly found on a utility pole. These wires include:
Static Wire: The static wire sits at the top of the pole and

What's On That Pole | Bluestem Electric Cooperative

Ever pass an electric utility pole and wonder what all that equipment is for? This illustration shows the basic equipment found on electric utility poles. The

What Are Each Of The Wires On Utility Power Poles?

Utility poles consist of three distinct layers or spaces. The top layer is the supply space. The middle layer is the neutral space and the bottom layer is

Utility Pole Guy Wire Requirements: A Must-Read Guide

Master the utility pole guy wire requirements with our comprehensive guide. Click to find out how to implement best practices in your

How to Attach a Power Line to an Electrical Pole: A

Whether you choose to attach the power line to an existing pole or construct a new pole structure, it's essential to prioritize safety and compliance. Consult with

Someone came by and placed this wire from a pole to

It's a type of guy wire that is anchored into the ground and attached to a utility pole

How To Install Guy Wire | Utility Pole Guy Wire Installation | Stay ...

Guy Wire | MM ASIF | ke sath Huzoor Hoon. A guy-wire, guy-line, or guy-rope, also known as simply a guy, is a tensioned cable designed to add stability to a free-standing structure.

How To Anchor The Power Line To The Side Of The House

Coordination with the power company is required to anchor the power line to the side of a house. A permit may be required, and the local building

Poles_101.pub

Because utility poles are almost everywhere, they are often used to deliver more than electricity. In addition to street lighting, utility owned poles often carry telecommunications equipment that brings

What's on a Pole?

What's on a Pole? Common Equipment on an Electric Distribution Pole Insulator Prevents energized wires from coming in contact with each other or the utility pole.

Understanding Utility Pole Wires: Everything You Need

Discover the essential roles of wires, cables, and insulators on utility poles. Learn how to identify them and their functions in our comprehensive guide!

Decoding Utility Pole Wires: A Visual Guide for US Residents

Understanding utility pole wire identification can seem daunting, but it is crucial for safety and awareness. This guide will help US residents interpret the complex web of wires they see daily.

A Guide to Guy Wire Installation

How to Tighten Cable and Install Guy Wire on a Utility Pole Why Choose Bekaert Request Custom Guy Wire Products From Bekaert Around the world, professionals use guy wires as supporting elements

Power Pole Anatomy

Power lines are part of the landscape in many cities, running alongside major roads in neighborhoods and city centers. But did you know that power poles can have

What Are Those Wires on a Utility Pole? A Homeowner's Guide

We'll demystify the jumble, teaching you how to safely identify the different lines overhead, from high-voltage power to fiber optic cable. But before we begin, let's establish the most important

How to Use a Guy Wire: Function, Fittings and Installation

A guy wire is a lightweight galvanised cable that is used to provide stability to poles or towers. It is also referred to as guy strand, guyed wire, guy line, guy rope, or

A Guide to Guy Wire Installation

These cable stability structures are necessary throughout various industries, specifically for utility services. It's essential to know key points regarding guy wire installation to ensure you choose the

The Ultimate Power Pole Diagram: Understanding the

Utility Poles: These multipurpose poles are used to carry various utility lines, including power, telephone, and cable lines. Maintenance and Safety: Regular

Power Pole Guide Wire: A Complete Setup Checklist

Power pole guide wires are tensioned cables that provide lateral support to utility poles, allowing them to withstand wind loads and other forces. Their primary

Power Distribution 101

01 WHAT IS A UTILITY POLE? Utility poles form the backbone of electrical infrastructure in the U.S. These mid-19th century inventions originally carried telegraph lines but were later adapted to support

A Complete Guide to Understanding Residential Utility

Learn about the different components of a residential utility pole diagram, including power lines, transformers, meters, and more. Find out how these elements work

How to Install Coax Cable Between Utility Poles

Cable installation from the output tap to the home can run through myriad different courses, some being unorthodox. The job of the cable installer is to devise the most efficient method while keeping within

How Electric Pole Guy Wire Affects Utility Pole Stabili...

Explore the vital function of electric pole guy wire in ensuring utility pole stability. Uncover the details that keep our electrical systems safe.

What's on that pole?

What's on that pole? This illustration shows the basic equipment found on electric utility poles. The equipment varies according to the location and the

Utility pole

OverviewDescriptionUsePole attachment hardwareAccessDead-end polesHistoryMarkings

The standard utility pole in the United States is about 35 ft (10 m) tall and is buried about 6 ft (2 m) in the ground. In order to meet clearance regulations, poles can, however, reach heights of at least 120 feet (40 meters). They are typically spaced about 125 ft (40 m) apart in urban areas, or about 300 ft (100 m) in rural areas, but distances vary widely based on terrain. Joint-use poles are usually owned by one util

Contact Us

For more information, pricing, or custom solutions, please contact us:

Website: <https://pvprojekt.com.pl>

Email: contact@pvprojekt.com.pl

Phone: +48 512 897 346

Address: ul. Tęczowa 17, 61-001 Poznań, Greater Poland Voivodeship, Poland

This document is for informational purposes only. Specifications subject to change without notice.

