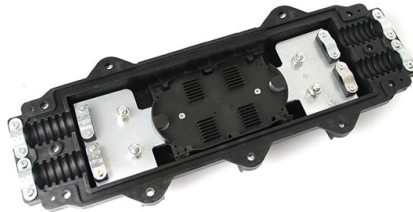


2 0mm Thickness Cable Tray Weight



Overview

Cover Weight (kg) = Material Density (kg/m³) × Cover Width (m) × Cover Thickness (m) × Cover Length (m) Tray rated for 50 kg/m is suitable. A typical run may include straight sections, fittings, and covers; ignoring self-weight can understate reactions, especially on long spans and congested corridors. For planning, engineers. The Cable Tray Weight Calculation involves considering various factors, including tray specifications, material, and thickness. In this guide, we'll walk you through the step-by-step process for calculating cable tray weight, while providing examples for both channel trays and ladder trays. This. us-trations without notice. All illustrations, descriptions and technical information included in this document are provided as indications and can cable trays are equivalent. They reach NEC fill limits much faster than ladder or perforated trays and are not suitable for large power cables or future expansion. Wire mesh cable trays (basket trays) are favored for data, telecom, and light power systems, especially where. Specialized/Sigma Factory for Steel Products (SFSP) was first established in KSA in 1989 and has been expanding ever since through a variety of products and through its geographical presence.

Article Content

Cable Tray Weight Calculator

Compute tray weight from dimensions, thickness, and material density. Include covers, perforation, joints, and safety factor options. Download clear CSV and PDF reports for documentation.

Cable Tray SPCT 50/50HD | Ramdev Steel Industries

Perforated Cable Tray System crafted from premium hot-dip galvanized steel, offering protection against corrosion. With side height 50mm Availability Width of

How To Calculate Weight Of Cable Tray » Wiring Work

Understanding how to calculate the weight of a cable tray is essential for those who are involved in electrical wiring and electrical installations. Knowing

CABLE TRAY

SFSP produces a variety of products ranging from cable management systems; cable trays, cable ladders, basket trays, trunkings and support systems, to mechanical cladding fixations, steel lintels

Cable Ladder Cable Tray Weight Calculation Guide

The Cable Tray Weight Calculation involves considering various factors, including tray specifications, material, and thickness. In this guide, we'll

How To Calculate Weight Of Cable Tray » Wiring Work

Calculating the weight of a cable tray is not always easy, but by following some simple steps, it can be done accurately. Understanding how to

Ladder Cable Tray

Ladder Cable Tray - Weights, kg/m ... Values are applicable to all resin systems, where possible. 0710 16602 Central Green Blvd. Houston, TX 77032

Cable Tray Technical Guide A practical guide to product selection and ...

Cable Tray Technical Guide A practical guide to product selection and installation This guide for engineers and installers has been developed by ABB as a practical reference regarding cable tray

High Load Bearing Capacity Galvanized 0.5-2.0mm

Ladder cable trays are designed to have a high load capacity, making them suitable for supporting heavy and large numbers of cables. They can handle the weight of

GUIDE CABLE TRAYS TECHNICAL

NEMA VE 1-2017 Specifies requirements for metal cable trays and associated fittings designed for use in accordance with the rules of Canadian Electrical Code, Part I and the National Electrical Code®

Cable Tray Dimensions Guide: Standard Sizes, Tray

In practice, cable tray dimensions are a system of interrelated measurements—width, depth, length, and material thickness—that directly affect

CABLE TRAY, CABLE LADDER, CABLE TRUNKING CATALOGUE

Bare galvanized Depth. Standard thickness. 1.2mm for light load. 1.5mm for medium load. 2.0mm for heavy load. 2.5mm for extra heavy load.

Cable Ladder Cable Tray Weight Calculation Guide

In this guide, we'll walk you through the step-by-step process for calculating cable tray weight, while providing examples for both channel trays and

Cable Tray Sizes and Weights Chart | PDF

The document provides pricing information for ladder cable tray and perforated cable tray in Indian rupees per meter for various tray widths, material thicknesses, and

Cable Tray Weight Specifications | PDF | Computers

This document provides specifications for medium duty perforated and solid cable trays. It lists the part numbers, widths, and weights per meter of cable trays with

ASTM A792 Galvalume Steel Coil DX51D+AZ AZ150 AZ180 0.3mm-2.0mm

A□The life of galvalume steel coil depends on the end application and environment, as well as the weight of Aluzinc. The life of AZ150gsm cable tray in an indoor environment is 30 years.

FRP Cable Tray Price List

Find verified FRP cable tray manufacturers, suppliers & exporters. Get the latest FRP cable tray price list here. Contact them now! Limited stock!

Cable Tray Roll Forming Machine

Cable Tray making machine Cable tray design size: Height: 50-200mm Width: 100-800mm Thickness: 2.0mm Machine design capacity Raw material thickness: 0.7

Cable Tray Size and Dimensions: How to Choose the

Learn how to calculate the perfect cable tray size and dimensions for your electrical project. This guide covers load capacity, fill ratios, and industry

Cable Tray Sizes and Weights Chart | PDF

The document provides pricing information for ladder cable tray and perforated

Perforated Metal Cable Tray Versatile Durable For Airports Train ...

Perforated Metal Cable Tray is a versatile, durable, and universally applicable cable support system designed for optimal cable management across a broad spectrum of environments.

CABLE TRAY

We manufacture a wide range of products capable of providing the characteristics which respond to the proposed application, along with quality of assembly, speed of installation, and cost-saving cable trays.

Cable Tray Size Calculation for Project Engineers

Cable tray size calculation is important for ensuring safe cable installation, proper heat dissipation, and enough spare capacity for future

Cable Trays

Cable Tray Systems The weight of cable trays is calculated based on the product details provided. For example, the weight of the CTA-M model can be found on

Cable Tray Dimensions Guide: Standard Sizes, Tray

We will first explain standard cable tray dimensions used across the industry, then examine how dimensions vary by tray type, and finally show how to

Cable Tray Weight Chart: Accurate Per Meter Weights

Need the cable tray weight chart? Find accurate per-meter weights for steel, aluminum, and FRP trays. Click to explore reliable data for your project needs.

Contact Us

For more information, pricing, or custom solutions, please contact us:

Website: <https://pvprojekt.com.pl>

Email: contact@pvprojekt.com.pl

Phone: +48 512 897 346

Address: ul. Tęczowa 17, 61-001 Poznań, Greater Poland Voivodeship, Poland

This document is for informational purposes only. Specifications subject to change without notice.

